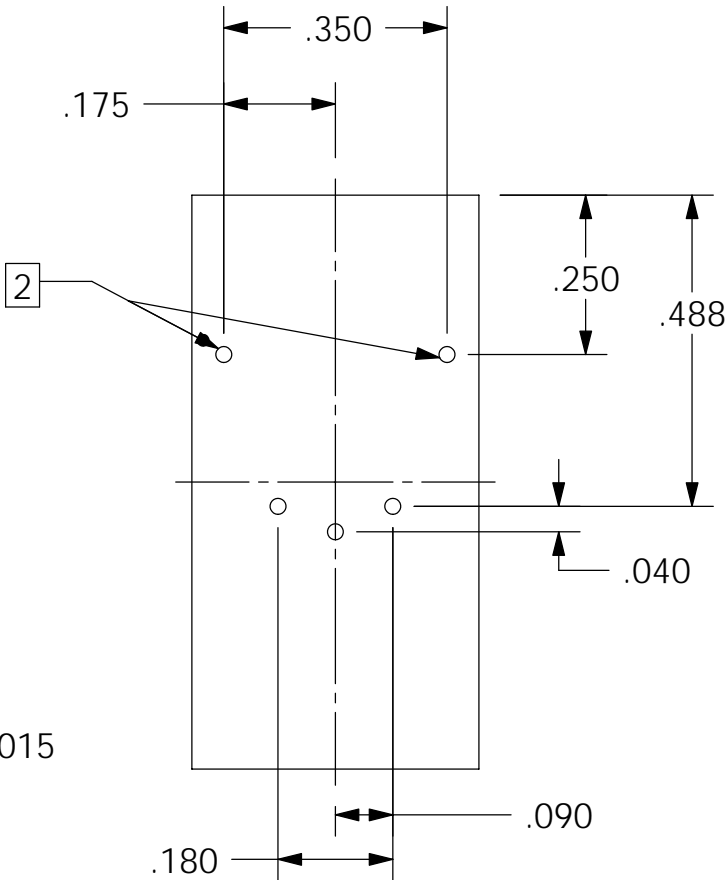
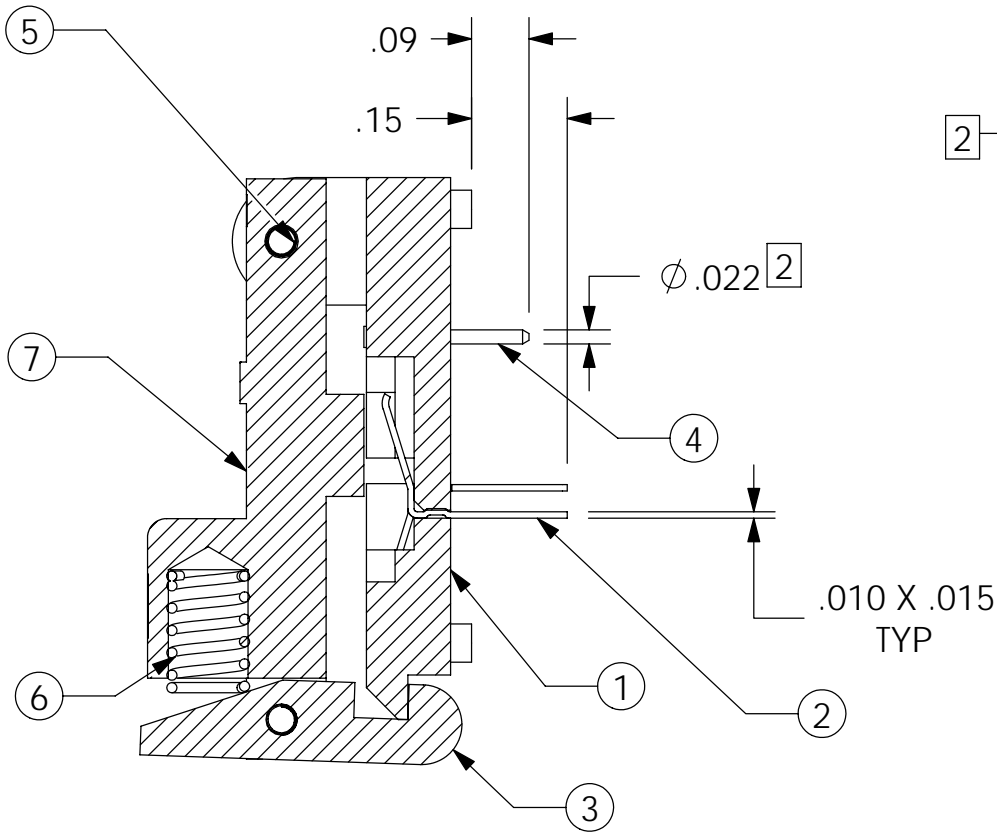
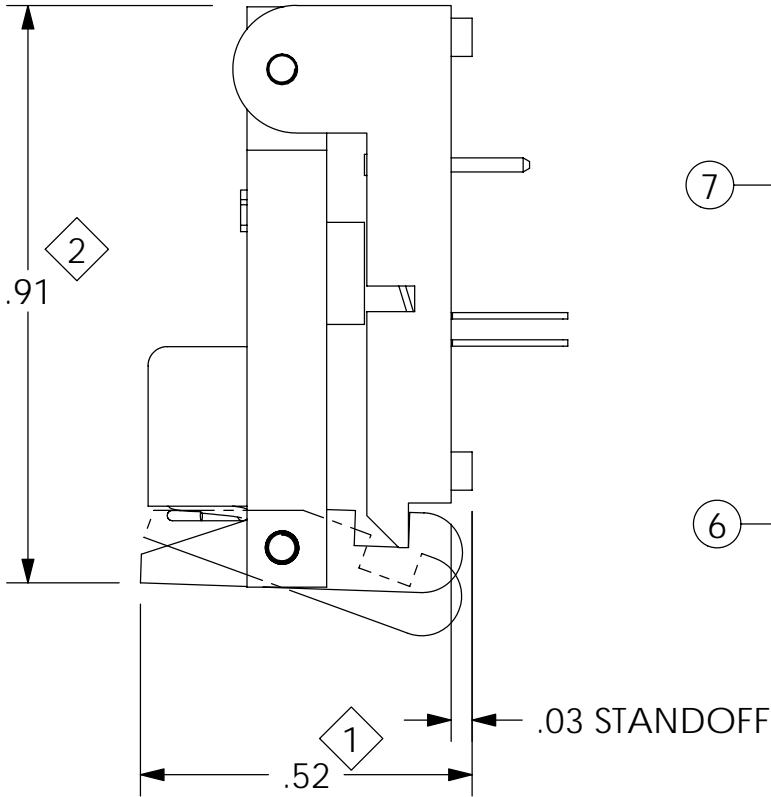
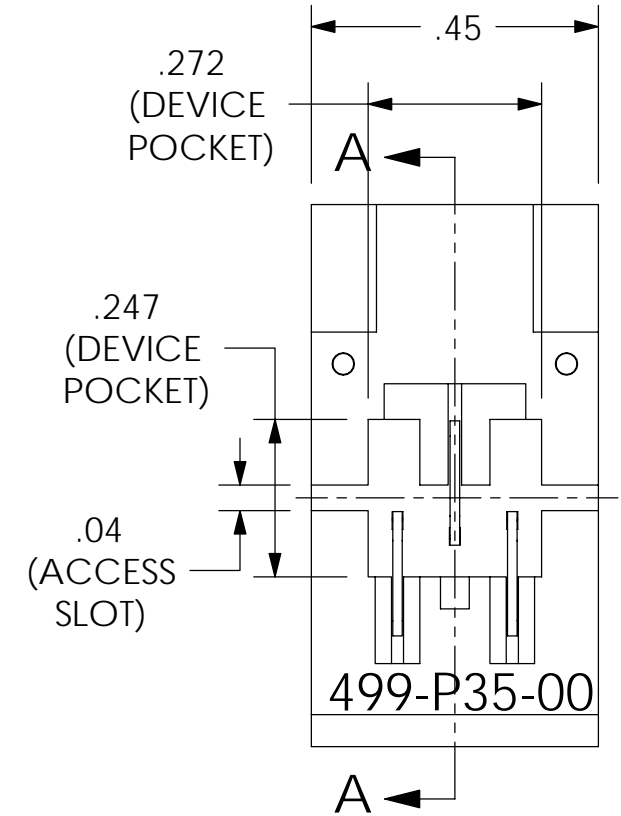


REVISIONS				
REV	ECN	DESCRIPTION	DATE	BY
A	06-0102	RELEASED FOR PRODUCTION	2/10/2006	DS







FOOTPRINT

FOOTPRINT SHOWN LOOKING
DOWN THRU SOCKET

7	1	001-337-31	LID
6	1	005-017-00	SPRING, COMP., .120IN. O.D., .250IN. LEN.
5	2	099-060-10	SPIRAL PIN
4	2	003-031-01	CONTACT PIN
3	1	001-338-00	LATCH
2	3	002-053-02	CONTACT
1	1	001-336-50	BASE
ITEM NO.	QTY.	PART NUMBER	DESCRIPTION

2. HOLES FOR MIL-MAX CONTACT PIN.
1. MATERIAL & FINISH:
BODY, LID, LATCH - PPS, AS MOLDED
CONTACTS - PFINODAL, Au PLATING

LEGEND		THIS DOCUMENT CONTAINS PROPRIETARY INFORMATION THAT IS THE SOLE PROPERTY OF WELLS-CTI. THIS INFORMATION IS TO BE HELD BY ITS RECIPIENT ON A CONFIDENTIAL BASIS , AND IS NOT TO BE DISCLOSED TO OTHERS OR USED WITHOUT WRITTEN CONSENT OF WELLS-CTI.	MATERIAL / FINISH	DRAWN	DATE	 WELLS-CTI PHOENIX ARIZONA USA	
	CRITICAL		<div>1</div>	DS	2/10/06		
2	TOTAL NO. OF  USED		REFERENCE	CHECKED	DATE	PART NAME SOCKET ASSEMBLY (D-PAK) W/ SOLDER PINS	
			-	GR	2/10/06		
			PROJECT / SERIES	ENGINEER	DATE	PART NUMBER <div>499-P35-20</div> REV. <div>A</div>	
SIZE	PROJECTION	499	DS	2/10/06			
<div>B</div>		TOLERANCES	ENG. SUPRV.	DATE	SCALE 3:1 UNITS: in [mm]		
		X.X ± 0.1 X.XX ± 0.01 X.XXX ± 0.005 ANGLE ± 1°	MFG. ENGR.	DATE			
		DO NOT SCALE	CAD NUMBER 499-P35-20.SLDDRW				SHEET 1 OF 1