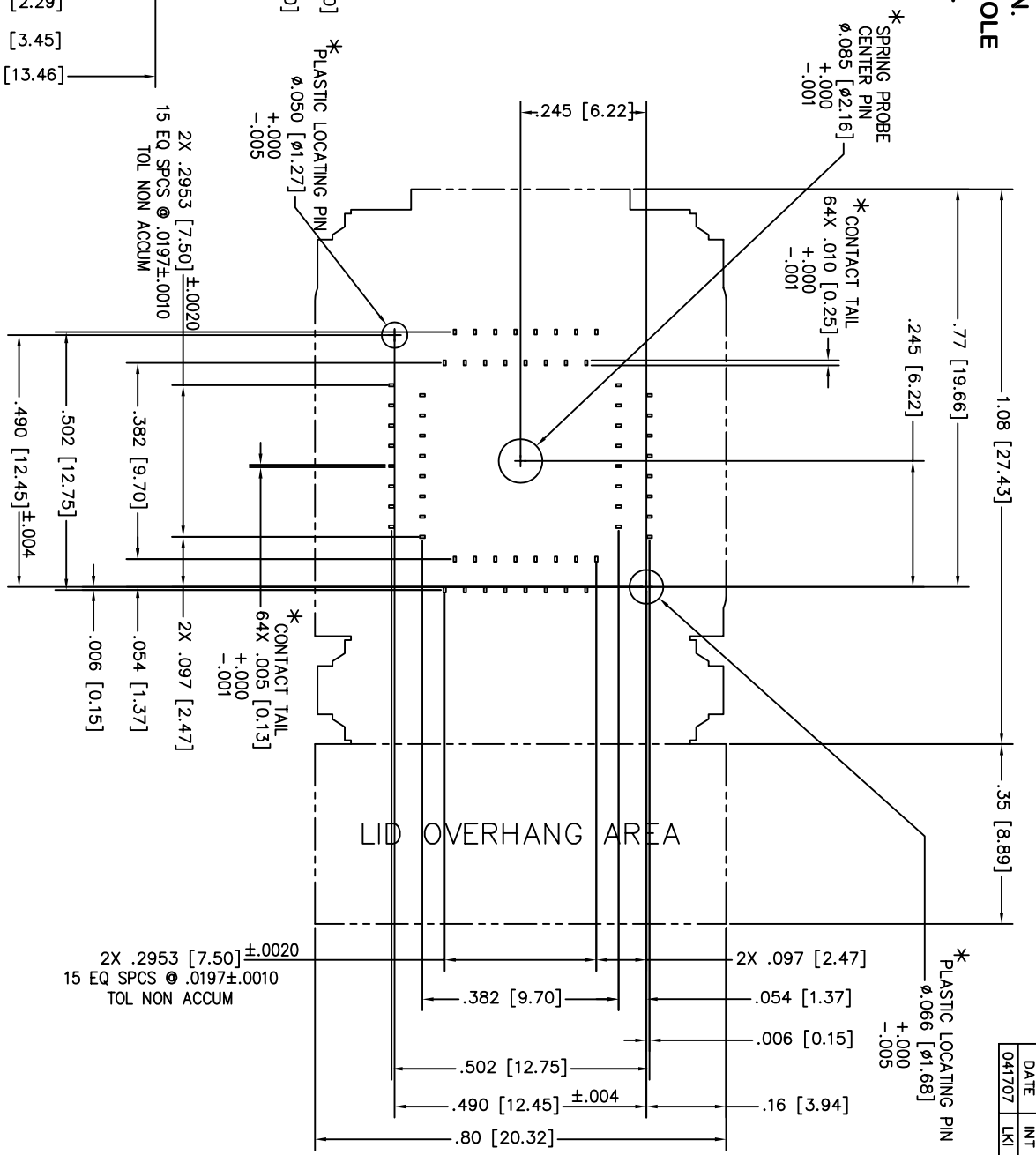
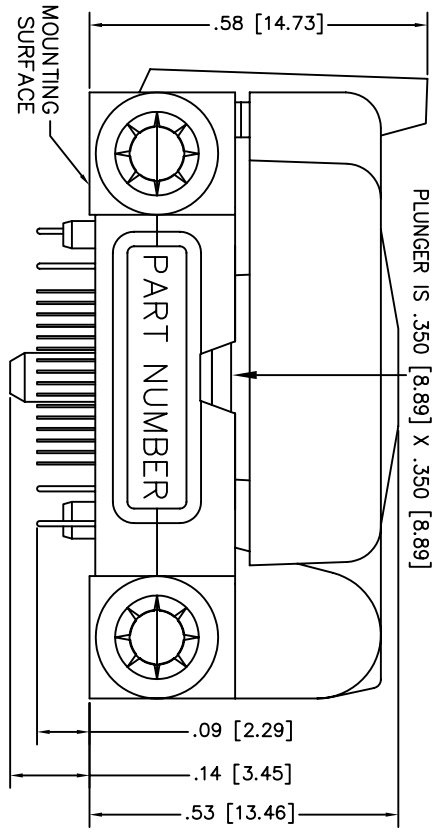
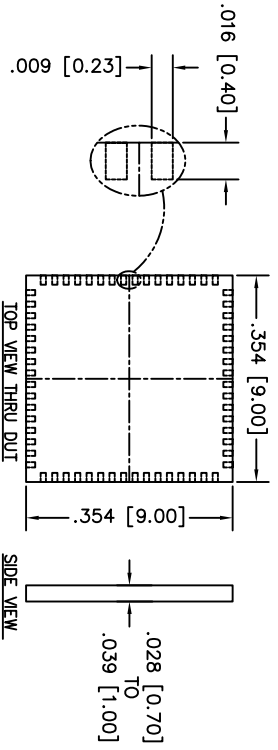
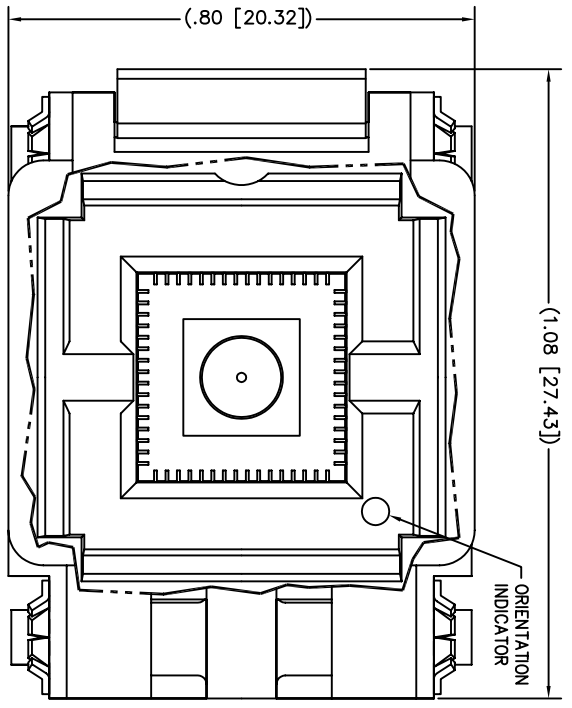


NOTE : * DIMENSIONS OF SOCKET FEATURES SHOWN. BOARD DESIGNER SHOULD SELECT APPROPRIATE HOLE SIZES TO PROVIDE A SLIP FIT FOR THESE FEATURES.



FOOTPRINT AS VIEWED FROM TOP OF SOCKET

THIS DRAWING IS SUBJECT TO CHANGE WITHOUT NOTICE. PLEASE REQUEST A CURRENT DRAWING WHEN LAYING OUT BOARDS.

FEATURES - S
= OFFSET CONTACT
= SPRING PROBE CENTER PIN

UNLESS OTHERWISE SPECIFIED:
 XXXX = ±.003 SURFACE
 XX = ±.010 FINISH
 ALL DIM ARE IN INCHES
 ALL DIM (XX) ARE MILLIMETERS
 REMOVE ALL BURS AND
 SHARP EDGES
 ANGLE = 45°
 ✓

SCALE NONE DATE
 DWG LKI 041707
 CHK
 ENGR
 APP'D

SIZE C DWG NO. 64QN50S19090 SH 1/1
 TITLE
 QFN SOCKET;
 9 x 9mm, 0.50mm-PITCH;
 64 CONTACTS PLUS SPRING PROBE
 CENTER PIN; THRU-HOLE
ASTRONOS 2801 TEMAS DRIVE
 IRVING, TX, 75062

PART NUMBER
64QN50S19090
PROPRIETARY

DATE INT
 041707 LKI